

HES-SO Valais Wallis  
Route du Rawyl 47  
1950 Sion 2  
www.hevs.ch

Designer:  
Oliver Gubler  
oliver.gubler@hevs.ch  
oliver.gubler@gmail.com

# CanSat Slave Power

Page	Title	Description
1	Cover	This first page
2	Revision	
3	Connector	
4	USB power	
5	debug	

CanSat Slave Power

cover

HAUTE ECOLE VALAISANNE

DES 2014-07-17 guo

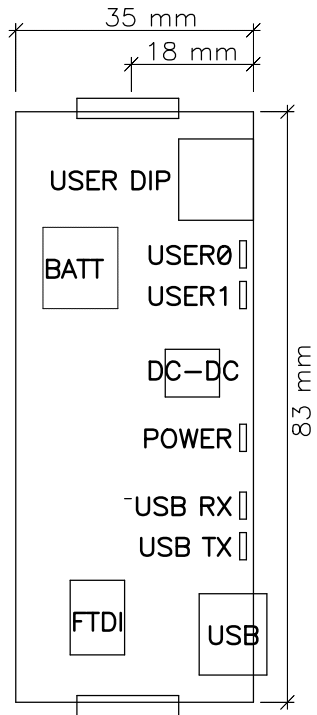
REV v1.0

1/5 {Path}  
CanSat\_Slave\_Power\_v2.sch

# Brief revision history

Revision	Major changes
1.0	first release
2.0	<ul style="list-style-type: none"> <li>* changed LDO to variable, as Gumstix works from 3V3 to 4V2</li> <li>* changed DIP-switch to stock one</li> <li>+ added testpoint for GND</li> <li>* switched D+ and D- on FTDI</li> <li>* replaced MINI USB by MICRO USB connector</li> <li>* reduced width by 1 mm on the left side, to gain some distance from other boards</li> </ul>

# Build info



- \* Battery connector has to be on the inside
- \* USB connector, DIP, LEDs, jumpers, testpins and markings have to be on the outside
- \* USB connector, DIP, LEDs have to be on the right border

CanSat Slave Power

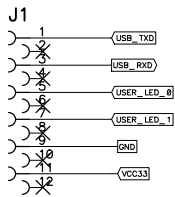
revision

DES	2014-07-17 guo
REV	v1.0
2/5	{Path} CanSat_Slave_Power_v2.sch

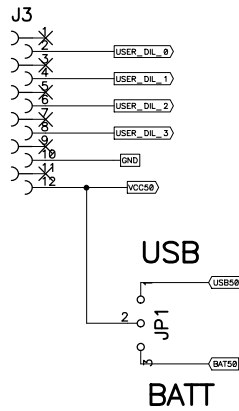
HAUTE ECOLE VALAISANNE

# Connectors

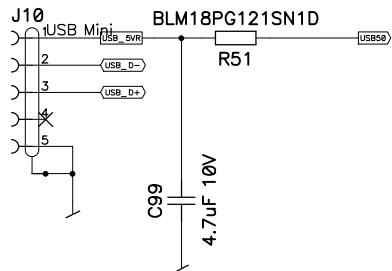
## Bottom (3V3)



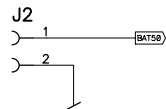
## Top (5V)



## USB



## Battery



CanSat Slave Power

connector

DES 2014-07-17 guo

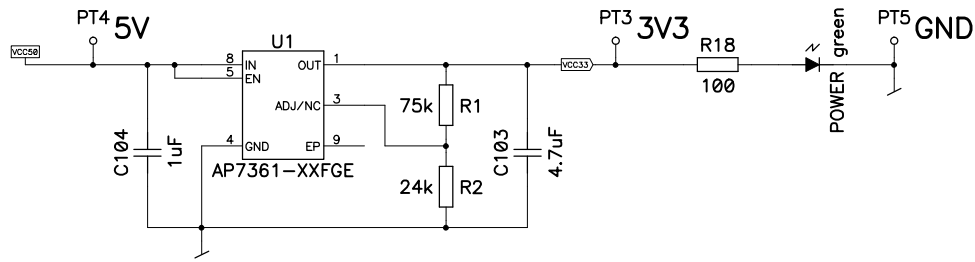
REV V1.0

HAUTE ECOLE VALAISANNE

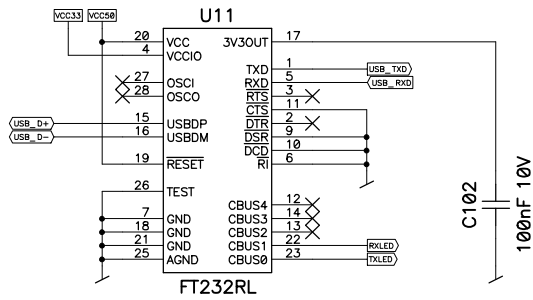
3/5 {Path} CanSat\_Slave\_Power\_v2.sch

# USB power

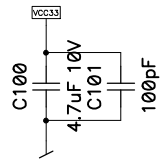
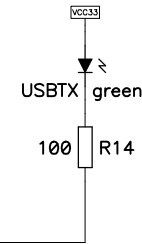
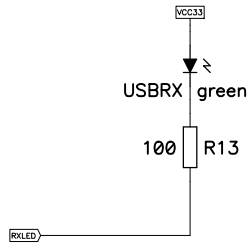
## DC-DC



## FTDI



## USB activity LEDs



CanSat Slave Power

USB power

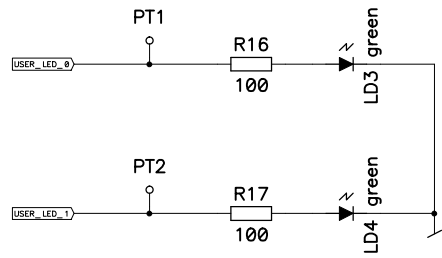
HAUTE ECOLE VALAISANNE

DES	2014-07-17 guo
REV	V1.0
4/5	{Path} CanSat_Slave_Power_v2.sch

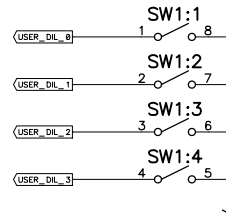
debug

### USER LED's

$$R = ( 3.3V - 2V ) / 20mA = 65$$



### USER DIP Switches



CanSat Slave Power

debug

DES	2014-07-17 guo
REV	V1.0
5/5	{Path} CanSat_Slave_Power_v2.sch

HAUTE ECOLE VALAISANNE