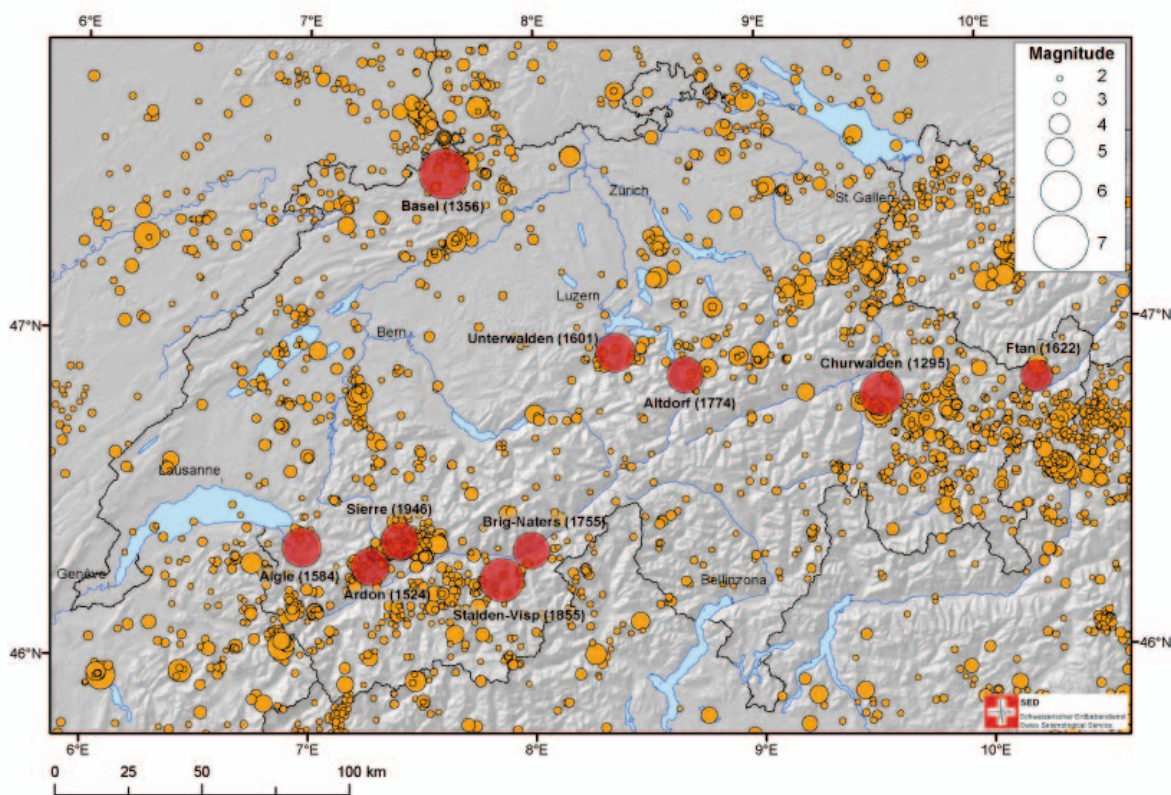


**Seismology@school
Field Trip
Friday October 24th 2014**

Sion – Tseuzier area

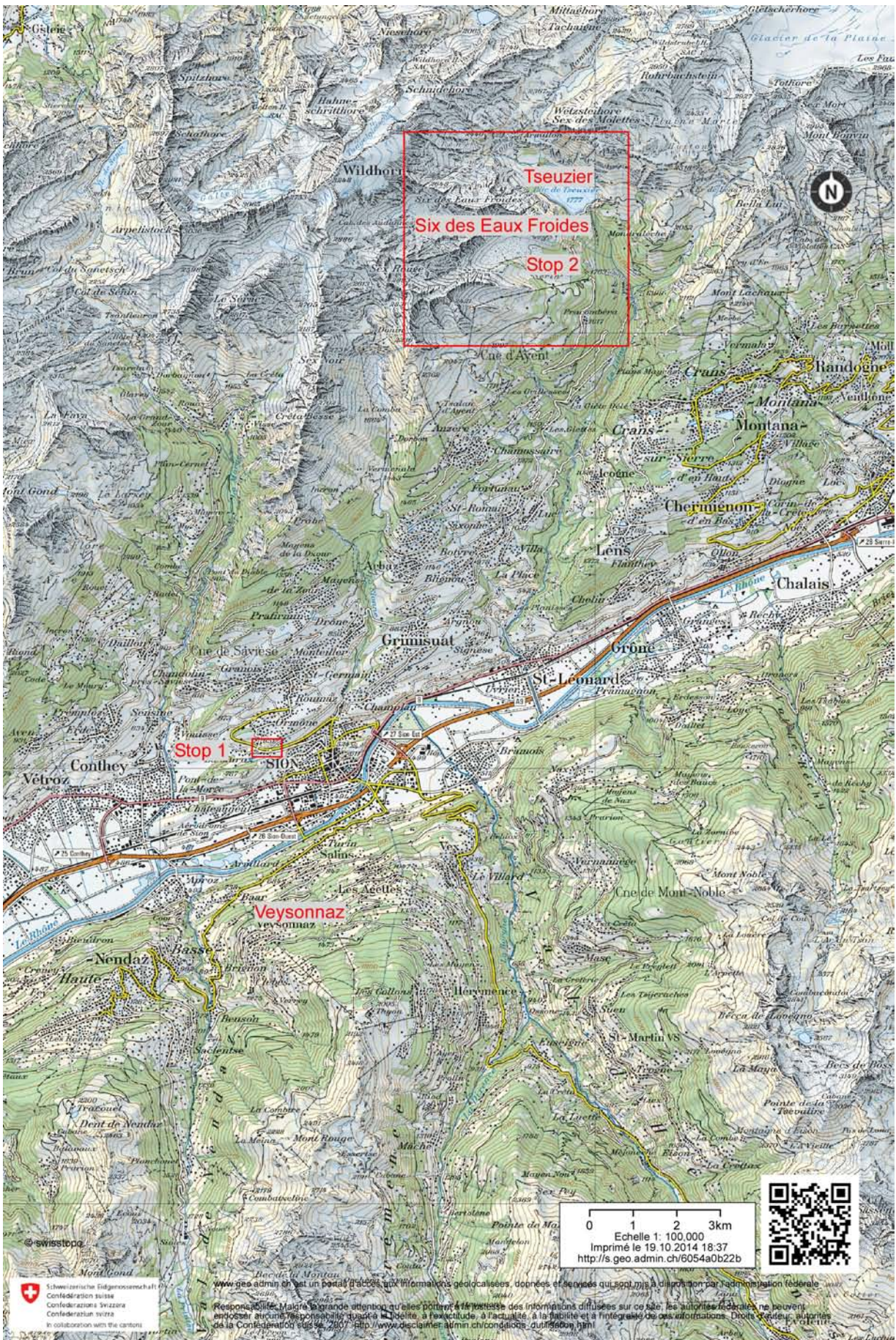
Jean-Luc Epard
Earth Sciences Inst., Fac. Géosciences and Environment
University of Lausanne

Jean-Luc.Epard@unil.ch



Map of the ten strongest earthquakes in Switzerland combined with earthquakes between 1975 to 2012 with a magnitude of 2 and greater.

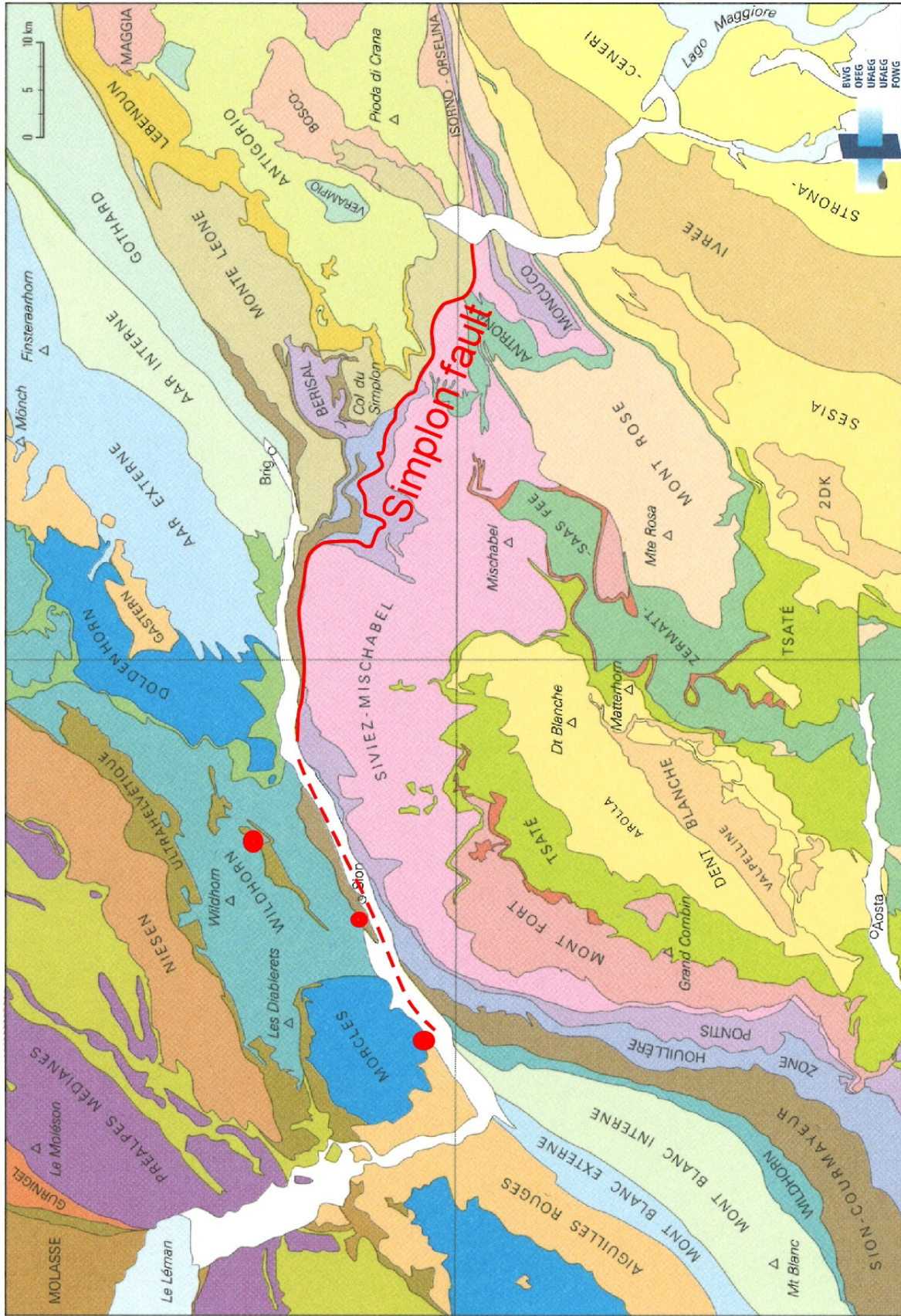
It is planned to visit the Six des Eaux-Froides area where a rockfall has been triggered by an aftershock of the main 1946 Sierre (Rawil) event.



Topographic map of the Sion-Tseuzier area

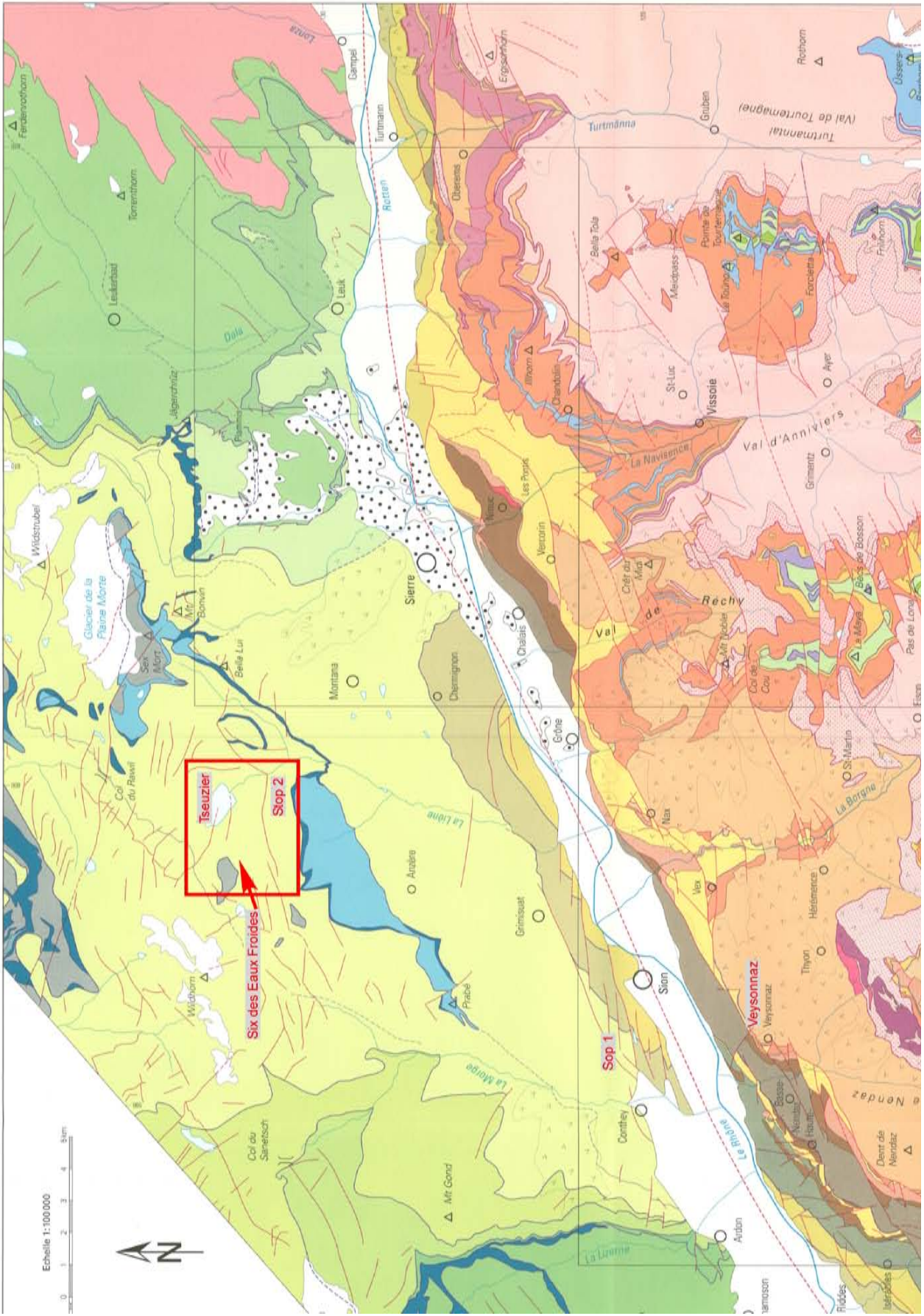
Carte tectonique des Alpes de Suisse occidentale 1:100 000

Esquisse 1:1 000 000

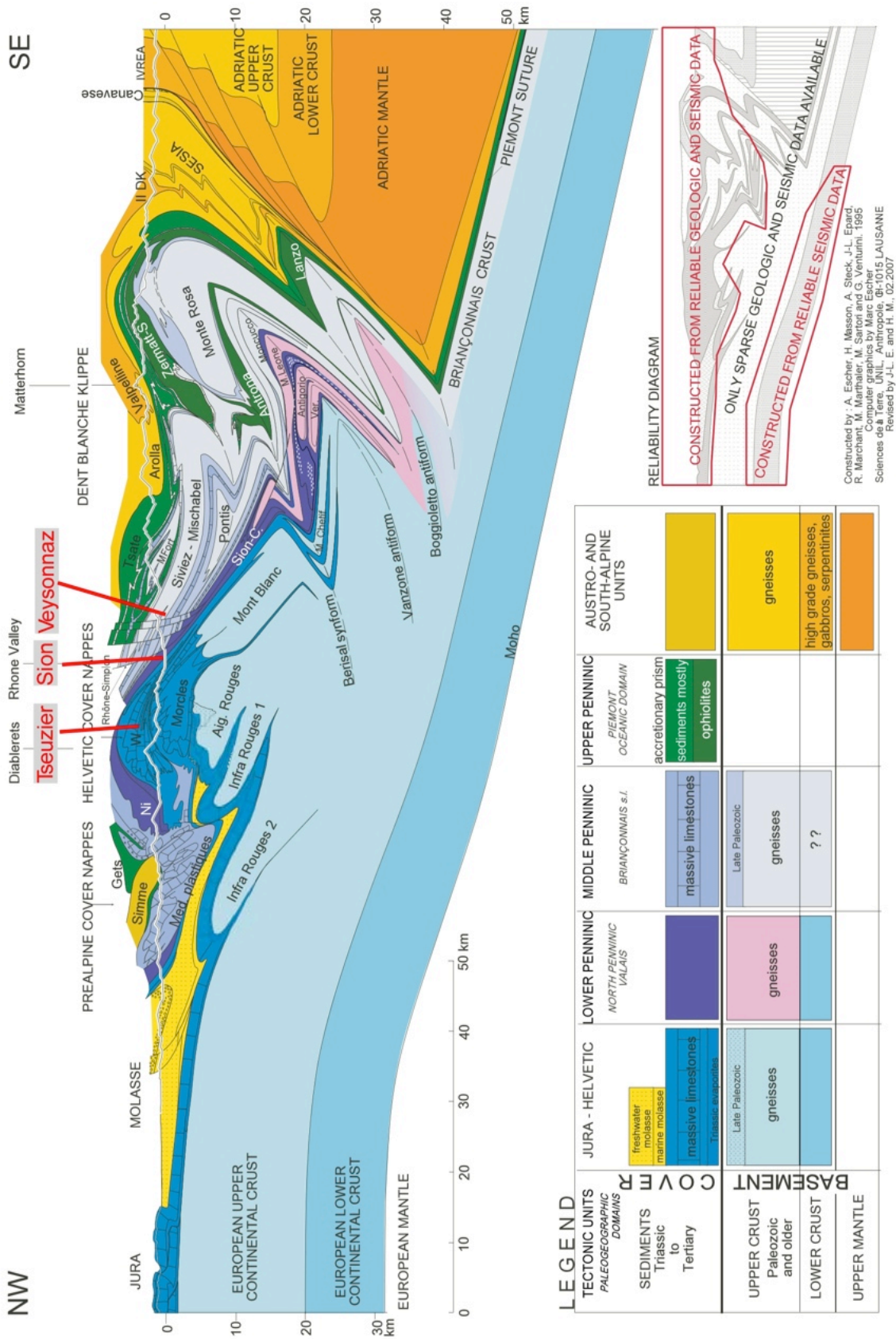


CH-3003 Berne-Ittigen

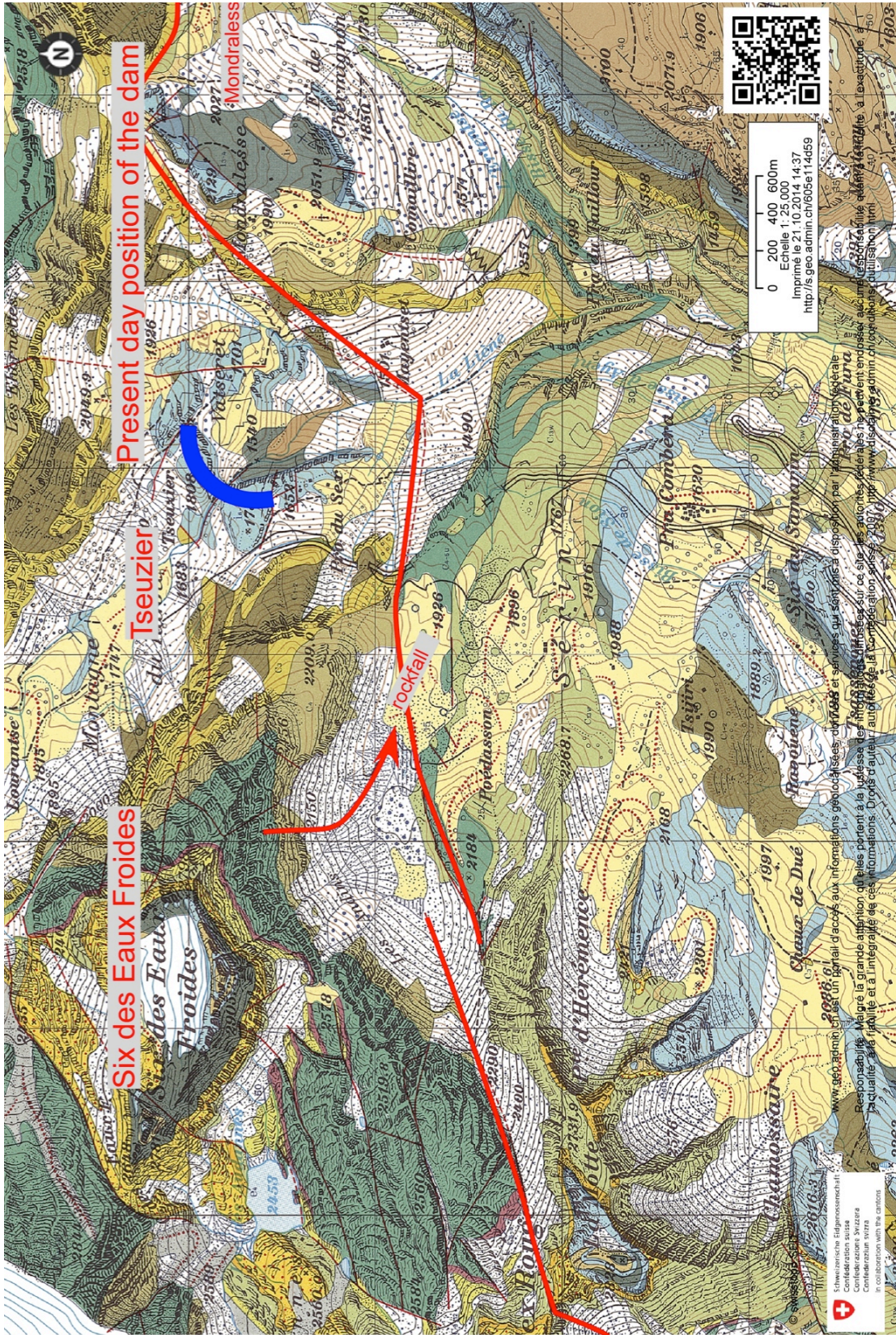
Simplified tectonic map of the Alps of Western Switzerland



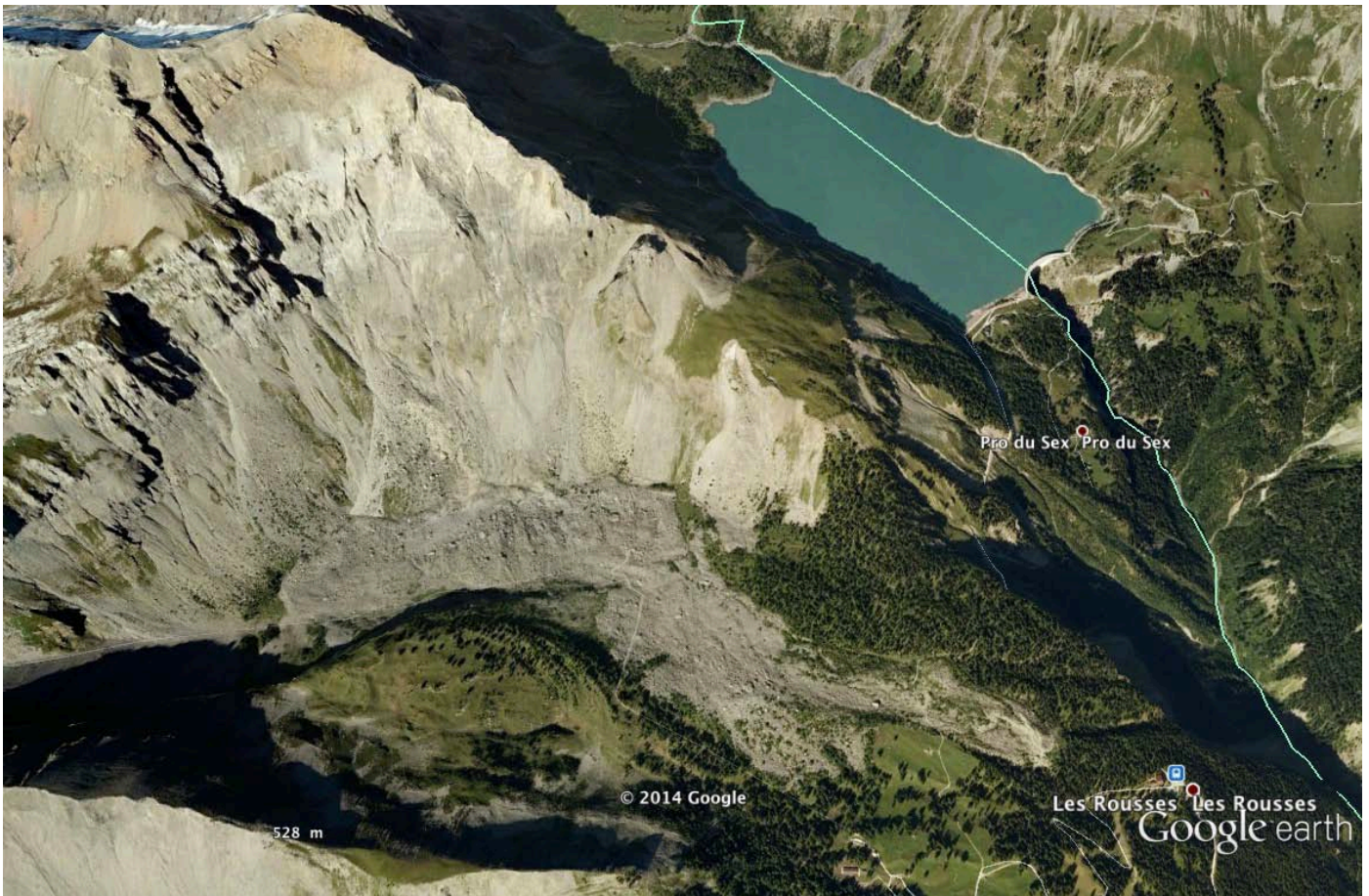
Tectonic map of the Sion-Tseuzier area



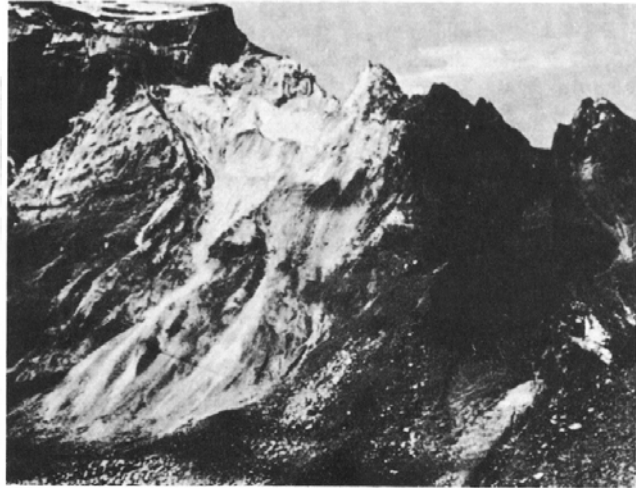
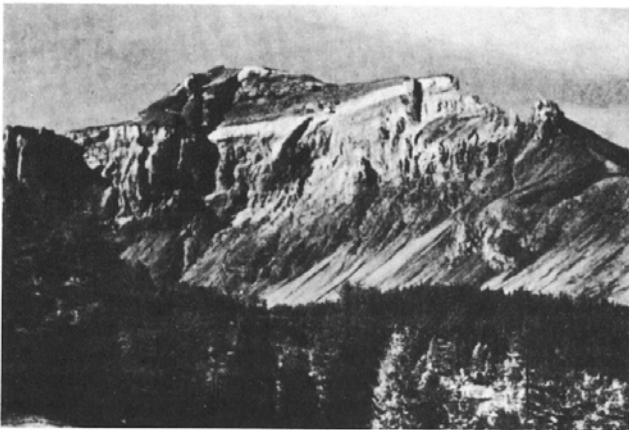
Vertical cross-section through the Alps of Western Switzerland



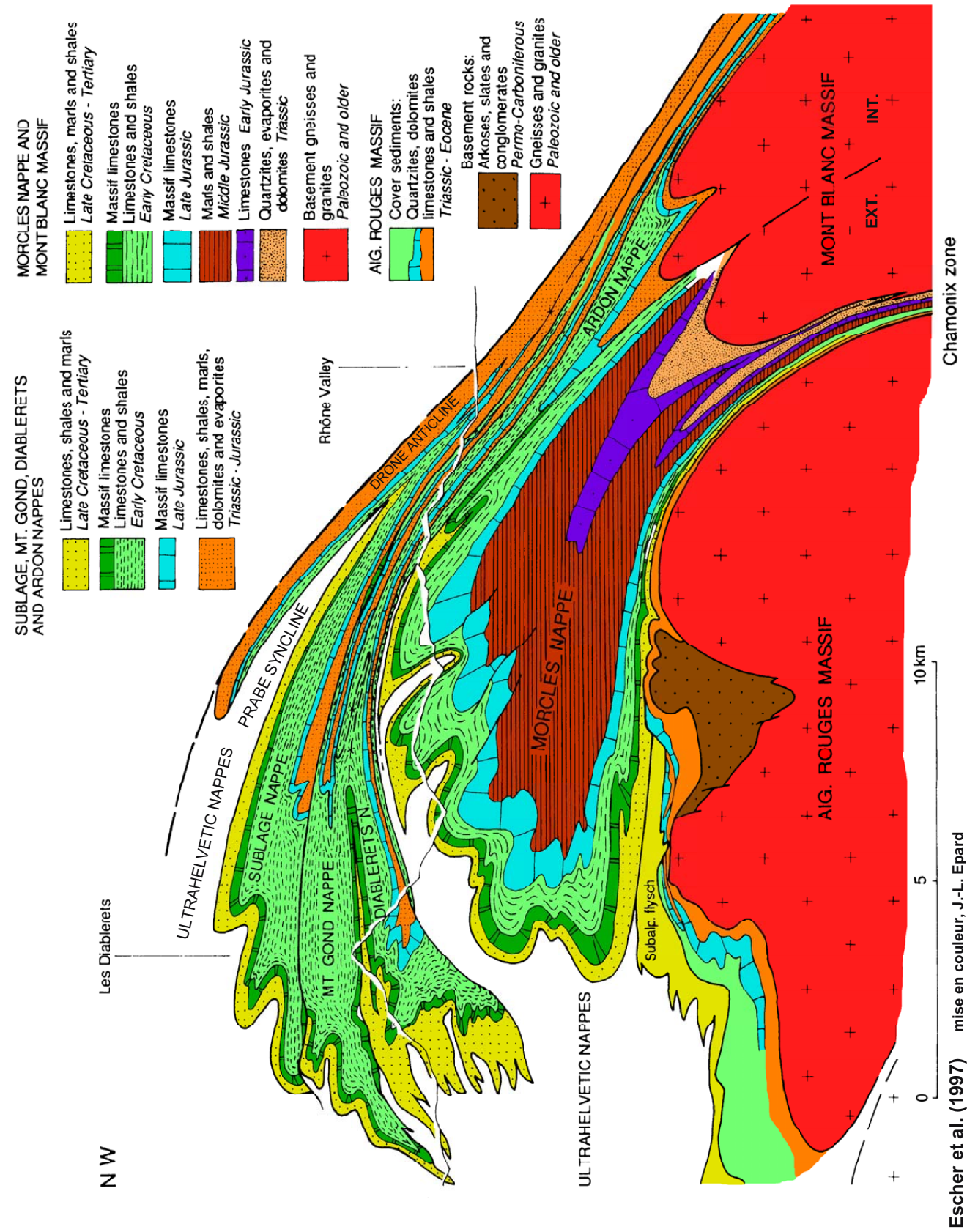
Stop 2: detailed geologic map of the Tseuzier – Six des Eaux-Froides



Google Earth image of the Six des Eaux-Froides and of the Tseuzier Lake and dam.



Six des Eaux-Froides before (left), and after right) the rock fall.



Section through the Helvetic nappes of Western Switzerland

Escher et al. (1997) mise en couleur, J.-L. Epard

Saillon

A

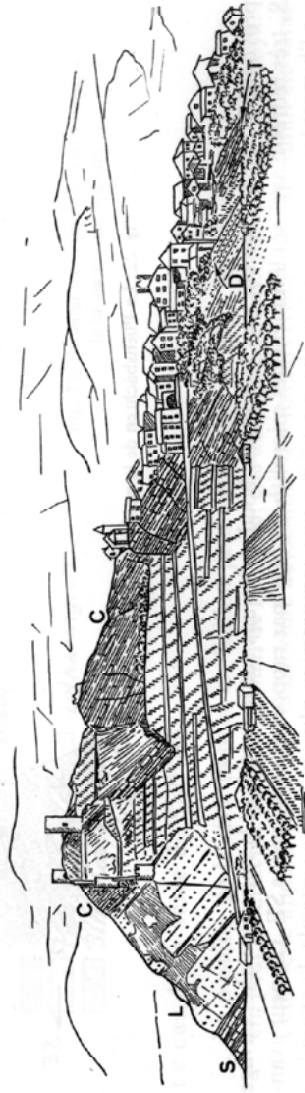
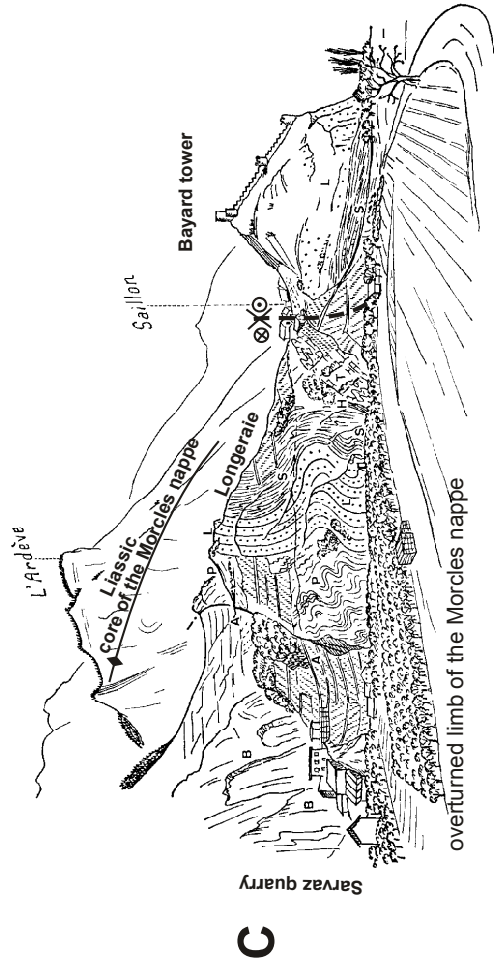
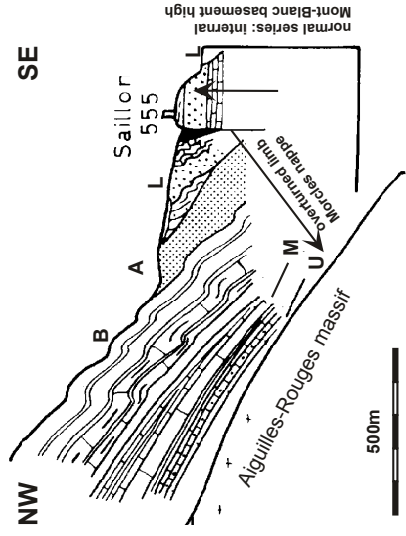


Fig. 20: La colline de Saillon, vue du Rhône.
 S = Sinémurien, L = Lotharingien, C = Carnien, D = Domérian, T = Toarcien.

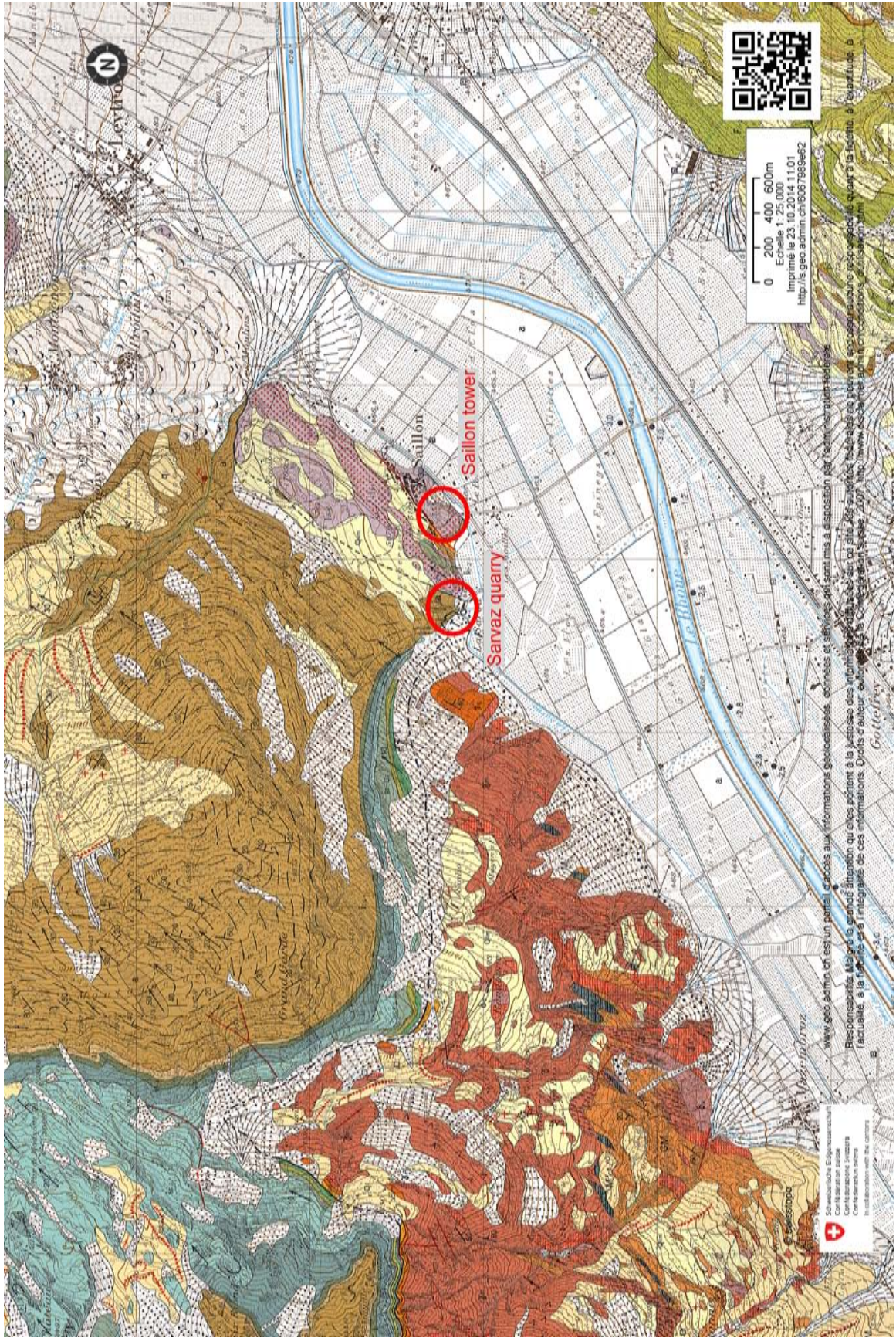


T: Trias; H: Hettangian; S: Sinemurian; L: Lotharingian; P: Pliensbachian; A: Aalenian; B: Bajocian



L: Lotharingian; A: Aalenian; B: Bajocian; M: Malm; U: Urgonian marble

Badoux (1971 et 1972)



Geologic map of the Saillon area